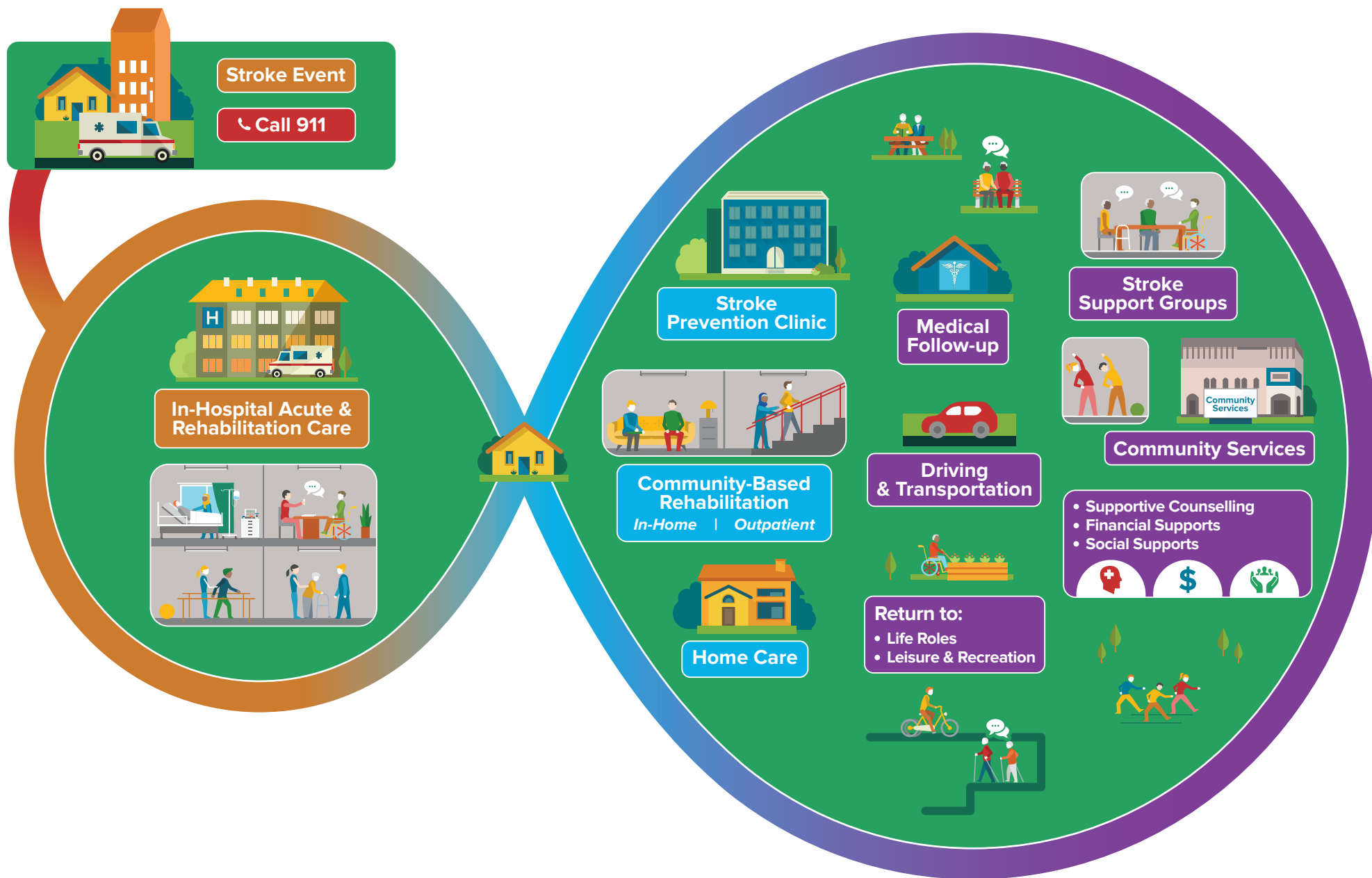


YOUR RECOVERY JOURNEY AFTER STROKE



Recovery Begins

Transitioning to Community

Recovery Continues

YOUR RECOVERY JOURNEY AFTER STROKE

As you recover, you may require support from some of the healthcare and community services listed below. These may change over time. Speak to any member of your healthcare team if you have questions or call **310-2222**. It is important to remember that everyone's recovery will be different.

Recovery Begins



In-Hospital Acute & Rehabilitation Care

- Emergency care
- Acute Stroke Unit care
- Inpatient rehabilitation
- Integrated Stroke Unit
- Complex Continuing Care
- Other _____



Your Healthcare Team may include:

- Communicative Disorders Assistant
- Dietitian
- Doctor
- Nurse
- Nurse Practitioner
- Occupational Therapist
- Occupational Therapy Assistant
- Patient Care Assistant
- Peer Visitor
- Personal Support Worker (PSW)
- Physiotherapist
- Physiotherapy Assistant
- Recreation Therapist
- Social Worker
- Speech-Language Pathologist
- Other _____

Notes _____

Transitioning to Community



Stroke Prevention Clinic

- Stroke specialist doctor
- Stroke specialist nurse
- Dietitian
- Other _____



Community-Based Rehabilitation

- Outpatient Rehabilitation
 - Physiotherapist
 - Occupational Therapist
 - Speech-Language Pathologist
 - Other _____
- In-Home Rehabilitation
 - Rapid Response Nurse
 - Occupational Therapist
 - Physiotherapist
 - Speech-Language Pathologist
 - Social Work
 - Other _____



Home Care

- Care Coordinator
- Nurse
- Personal Support Worker (PSW)
- Dietitian
- Meal Delivery
- Equipment
- Respite
- Caregiver Support
- Other _____

Recovery Continues



Stroke Support Groups

- Stroke Survivor & Caregiver Groups
- Aphasia Programs
- Living with Stroke Programs



Community Services

- Supportive Counselling
- Financial Supports
- Social Supports
- Adult Day Programs
- Spiritual Supports
- Cultural Centres & Supports
- Other _____



Medical Follow-Up

- Family doctor
- Nurse Practitioner
- Specialist doctor
- Nurse
- Physician Assistant
- Smoking cessation
- Diabetes Education
- Other _____



Transportation

- Return to Driving Programs
- Accessible Transportation Supports



Return to:

- Life Roles
- Work/School Services
- Volunteering
- Other _____
- Leisure & Recreation
- Stroke Specific Exercise Programs
- Community Exercise Programs
- Recreation Programs
- Hobbies