

SCAN – LTC HOMES

October 2009

BACKGROUND

- 39 LTC Homes in the southeast region (one interim beds)
- HPE has 14 LTC Homes (includes the smallest at 45 beds and the largest at 250 beds)
- Recent approval of 192 long-term care beds in Quinte area

BACKGROUND

- Urban & rural
- 'Old' and new
- Large & small
- PT in-house
- Other therapy services typically via the CCAC
- DON, DOC, ADON



GOALS

- Initiate contact
- Enhance understanding of challenges currently faced by LTC Homes
- Obtain feedback from LTC Homes on current supports offered by the SEO Stroke Strategy
- Inform SEO Stroke Strategy Workplans



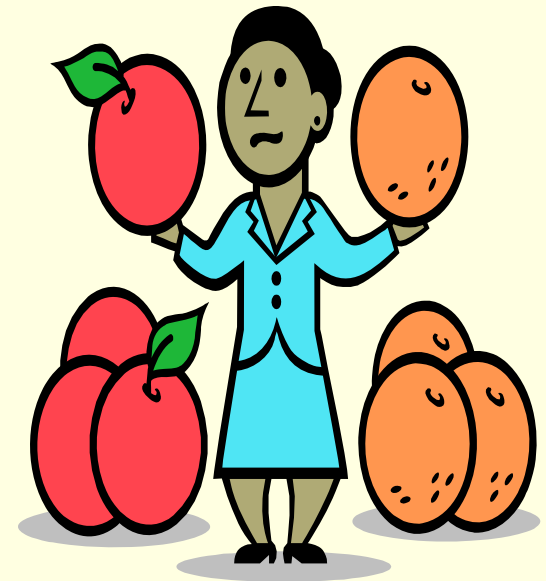
PROCESS

- Initiated July 2008
- Majority of scans by phone
- Initial contact & scheduling
- Final report to LTC Homes, RSSC, DSAC



VARIATIONS

- No significant differences across geographic areas
- Some differences noted with respect to urban versus rural homes; small versus large homes and older versus newer homes.
- Broadly stated, small homes may have had increased issues with staffing capacity in some cases; rural homes with travel-related challenges and older homes with space and other infrastructure issues.

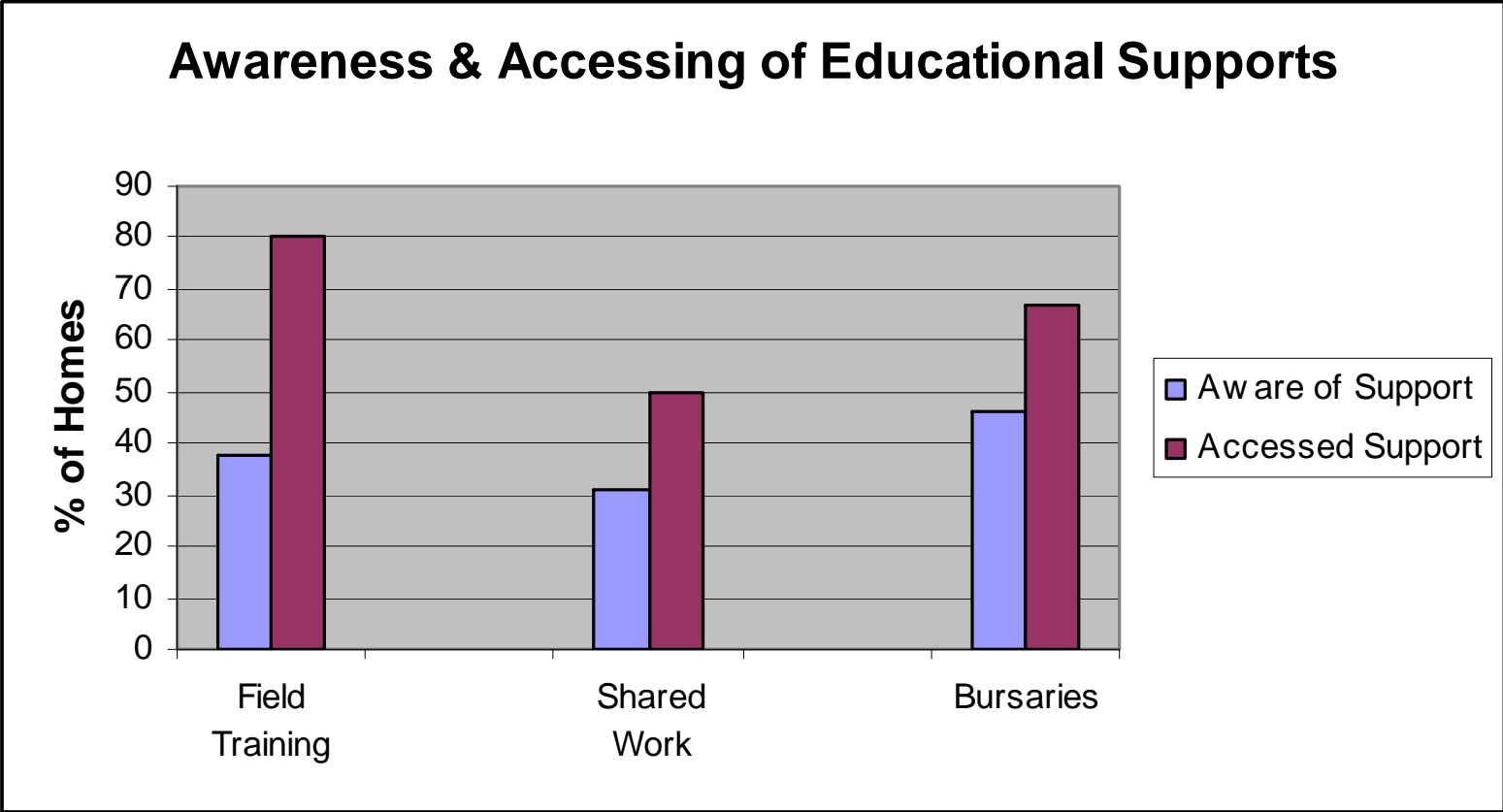


FOCUS AREAS

1. Educational supports
2. Learning approaches
3. Best practice & IPC
4. Assessment processes
(therapy)
5. Records & referral
information
6. Key challenges



FINDINGS



CHALLENGES

Field Training

- Staffing
- Understanding of support

Shared Work Experience

- Travel
- Back fill
- Applicability
- Understanding of support

Bursary

- Staff motivation (non-registered)
- Location
- Transportation
- Terminology (bursary=college/university setting)



CHALLENGES

Brain, Body & You

- Time Commitment/Motivation
- Location (distance & college setting)
- Transportation/travel reimbursement
- Staffing
- Financial (cost to backfill/pay staff to attend)
- Weekend scheduling (staff & facility)
- Similar in-house education
- Time of year (i.e. not summer or winter)



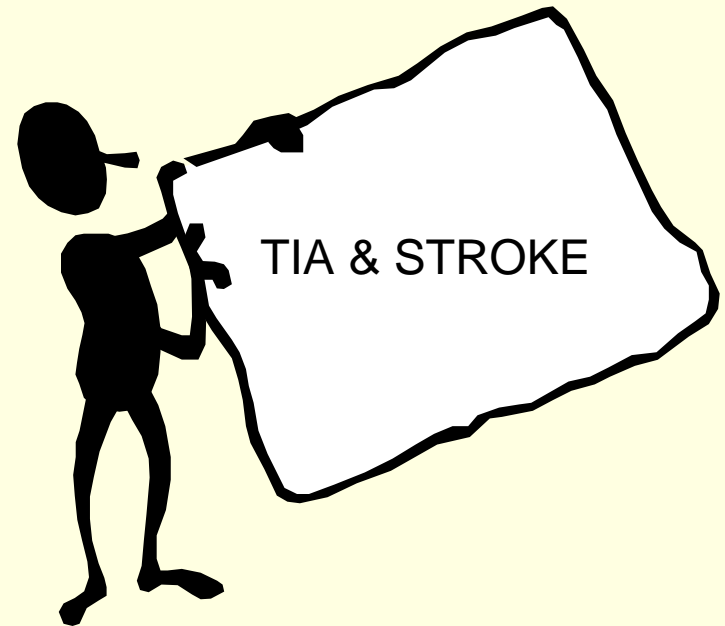
TIPS & TOOLS

- Use as infrequent resource (special care needs/challenges)
- Use of videos/DVD during orientation or as self-learning tool (evenings/nights)
- Central viewing area
- Binder contents as posters



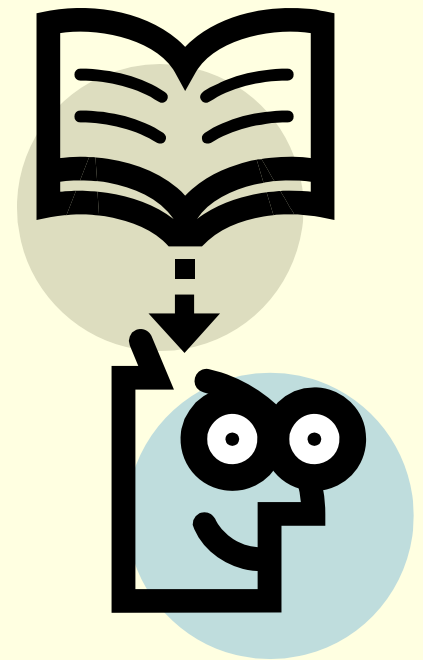
POSTERS

- Learn without intention
- Quick hits
- Staff, resident, family
- Link to → presentation, month, initiative
- Additional topics → emotional/behavioral aspects of stroke, physiology of stroke, feeding techniques, pain management, seating, TIAs, positioning, communication, assisting resident
- Include practical day-to-day tips & strategies
- Quizzes, sign-in sheets



LEARNING STRATEGIES

- Learning 'Blitzes' → no need for formal backfill, link to current initiative/issues, short sessions repeated throughout day, change of shift timing, 'hit and run' information
- Payroll inserts, newsletters, 'in-the-moment' opportunities, education board, education brought to unit, looped videos, distance (webcasts, teleconference), lunch and learns



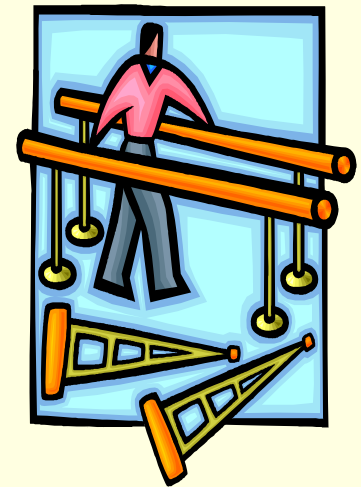
BEST PRACTICE

- Decision to initiate best practice via DOC, DON, ADOC, staff input
- Implementation dependent on best practice
- Stroke Resource Teams – no longer functioning (staff turnover, sustainability, competing priorities)
- Resource Teams – challenges with HR, time constraints, overlapping mandates

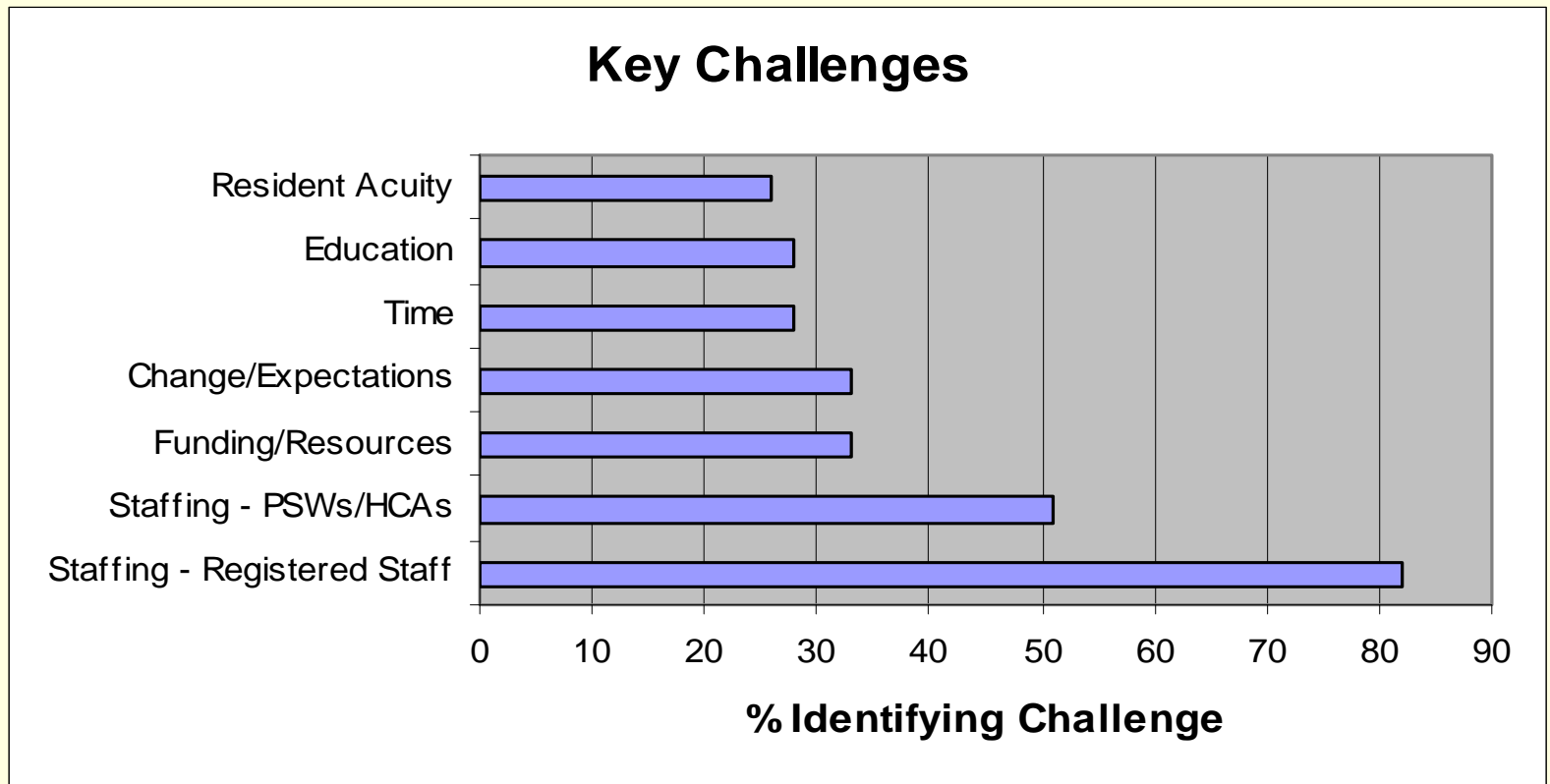


Rehab in LTC

- In-house PT → not usually FT, assisted by PTA, Restorative Care
- PT usually assesses on admission; reassessment if change in status, hospitalization, fall
- OT via CCAC (ADP assessments)
- SLP via CCAC – long wait times
- SW via CCAC – infrequently accessed
- In-house dietician → not usually FT



KEY CHALLENGES



SEO STROKE STRATEGY ROLE

Shared Work Experience & Field Training

- Marketing*
- Link to daily practice; hands-on & practical*
- Link to current in-house initiatives/projects
- Learning blitzes*
- Learning in the home*
- Identify non-users*

*NOTE: Points marked with an * indicate that this improvement strategy has already been implemented or is in the process of implementation*

SEO STROKE STRATEGY ROLE

Bursaries

- Marketing*
- Link findings in scan to Learning Collaboratives*
- Modify process*
- Identify non-users*

SEO STROKE STRATEGY ROLE

Brain, Body & You

- Marketing*
- Varied locations across region*
- Offer program during week versus weekends*
- Consider on-site options*

SEO STROKE STRATEGY ROLE

Tips & Tools

- Reference to resource at appropriate venues*
- Refresh subsequent to release of updated version
- Use as reference (including excerpts) for posters, etc.*
- Link to LTC resource/best practice teams

SEO STROKE STRATEGY ROLE

Posters

- Respond to varied audiences → staff, family, residents*
- Link to in-house initiatives
- Include optional quizzes, crosswords, sign-in sheets, applicable aids, etc.
- Table and wall-mounted versions*
- Expand current library*
- Marketing*

SEO STROKE STRATEGY ROLE

Learning Approaches

- Learning blitzes and ‘quick bites’*
- Capitalize on current in-house strategies (e.g. newsletters, payroll inserts, lunch & learns, etc.)
- Consider self-learning modules & toolkits for educators*
- Recognize expanding scopes of practice
- Varied learning strategies & contents*

SEO STROKE STRATEGY ROLE

Best Practice & IPC

- Partnering (RNAO, PRC, palliative)*
- Incorporate concepts (posters, Collaboratives, information sheets)*
- Potential MDS RAI link*
- Refresh of revised Tips & Tools

SEO STROKE STRATEGY ROLE

Assessment Processes

- Advocacy for role of therapy in LTC (rehab project)*
- Education on rehab role and individual therapists' roles*
- Incorporate therapy concepts into educational tools*

SEO STROKE STRATEGY ROLE

Records & Referral Information

- Potential for data gathering via MDS RAI*
- Promote information sharing across continuum (CRLT questionnaires)*

SEO STROKE STRATEGY ROLE

General

- Advocacy (Enhanced Rehab Project)*
- Responsive to LTC Homes (challenges & needs)*
- Link to current regional/provincial initiatives (SMILE, Nurse-Led Outreach Teams)*

QUESTIONS



Please contact:

Gwen Brown

Regional Stroke Community & LTC Coordinator

browng2@kgh.kari.net

613-549-6666 X 6867