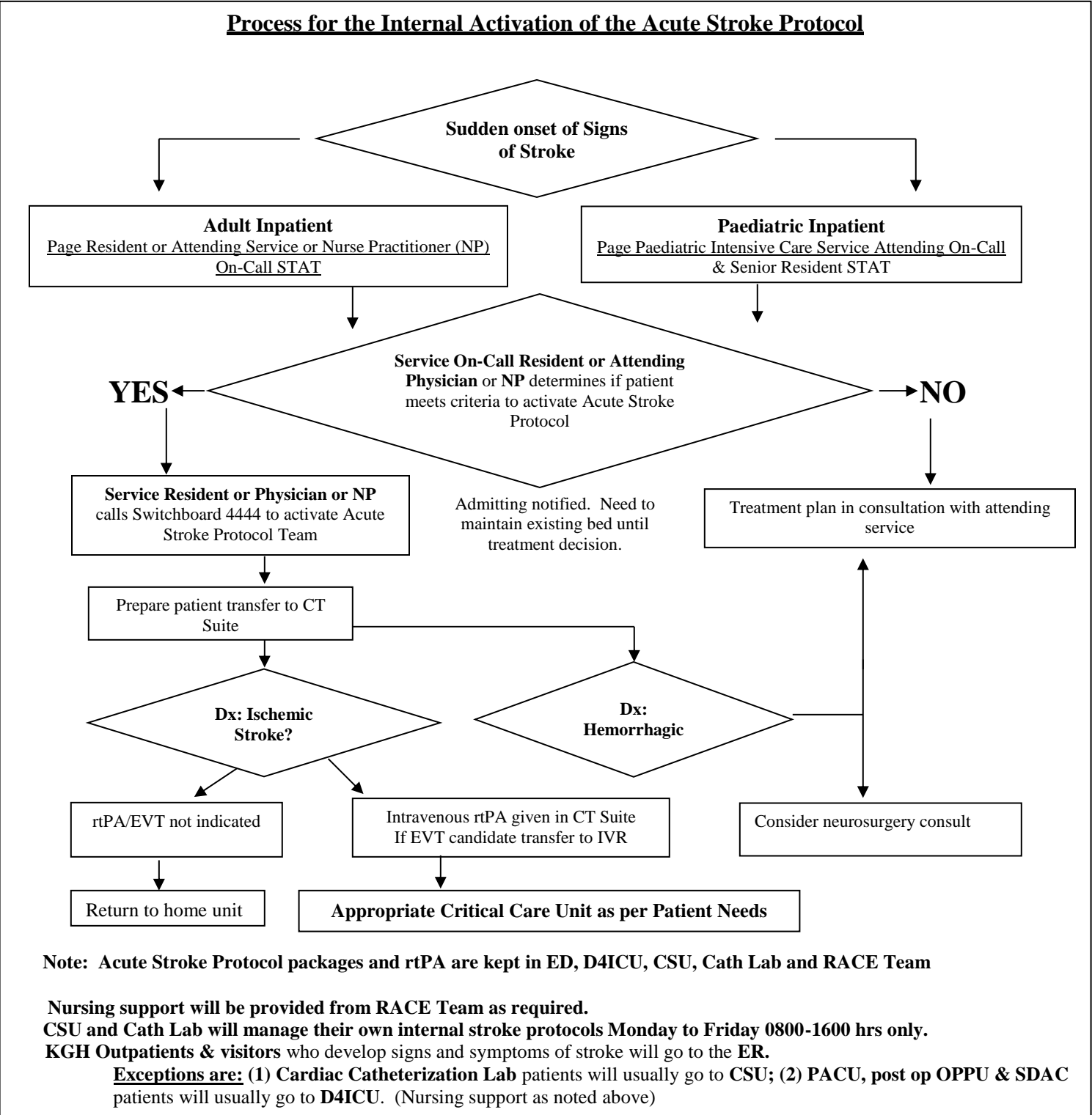


# KHSC-KGH Site INTERNAL ACTIVATION of the ACUTE STROKE PROTOCOL

**SIGNS of STROKE**  
**FACE:** Is it Drooping?  
**ARMS:** Can you Raise Both?  
**SPEECH:** Is it Slurred or Jumbled?  
**TIME** to page Service On-Call STAT

**UPDATED**  
**May 2018**

**Please act quickly to initiate appropriate assessment**  
 Intravenous rtPA and/or Endovascular Thrombectomy (EVT) can significantly reduce the effects of stroke if given to appropriate stroke patients within 6 hours of stroke onset. The earlier treatment is given, the greater the potential for recovery.



**Preparation of internal stroke patient for CT scan and for rtPA administration and/or EVT:**

**RN Responsibilities:**

- **Recognize** the signs of stroke.
- Act **quickly**; be mindful that time is BRAIN.
- Notify the **Attending Service** stat and communicate the patient's signs of stroke.
- If Attending Service activates stroke protocol, **prepare the patient:**
  - Monitor vital signs and stroke scale using Canadian Neurological Scale, cardiac and SpO<sub>2</sub> monitoring, glucometer reading, change to gown, remove jewelry on ears and neck/face.
  - Blood work (CBC, PT/INR, PTT, lytes, urea, creatinine, glucose, troponin, TxH packed red blood cells); establish 2 IV lines (18 Gauge needle in Right Arm to permit use of high injection velocity used in CT angiography) unless contraindicated. rtPA requires a dedicated IV line.
- Accompany to **CT Scan Suite**.
- +/- IV rtPA administered in CT Scan Suite.
- If EVT candidate, insert foley urinary catheter if ordered.

- Continue monitoring vital signs and neuro status q 15 min.
- **Communicate** with critical care unit **charge nurse** regarding bed transfers if patient receiving rtPA and/or EVT.
- Contact Manager or the Administrative Coordinator to arrange RACE nurse coverage if needed.
- **Assist in transport** and transfer care to receiving critical care unit nurse and/or IVR nurse (if EVT).
- Implement Ischemic Stroke Thrombolysis/EVT Order Set.
- Implement Ischemic Stroke Collaborative Care Plan.

**Questions? Contact:**

- **Stroke Specialist Case Manager** x 2830/vocera
- **Clinical Educator, Neurosciences** x 4083/vocera
- **Administrative Coordinator** after hours