

# Integrated Stroke & Rehabilitation Unit

Quinte Health Care



Derk Damron  
Hannah Healey  
Angela Maxwell  
Melissa Roblin  
Shirley Williams

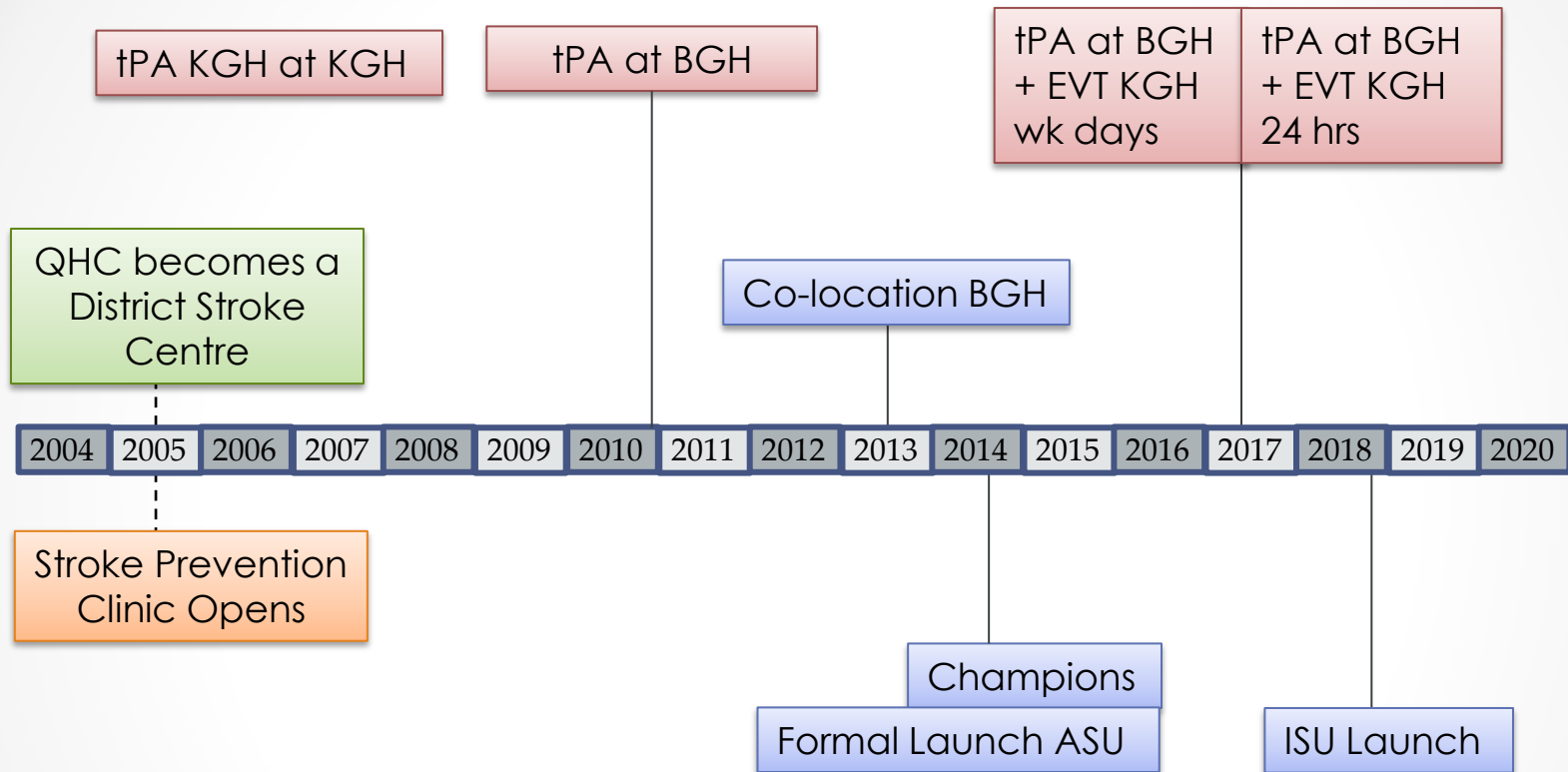
November 27<sup>th</sup>, 2019

# AGENDA

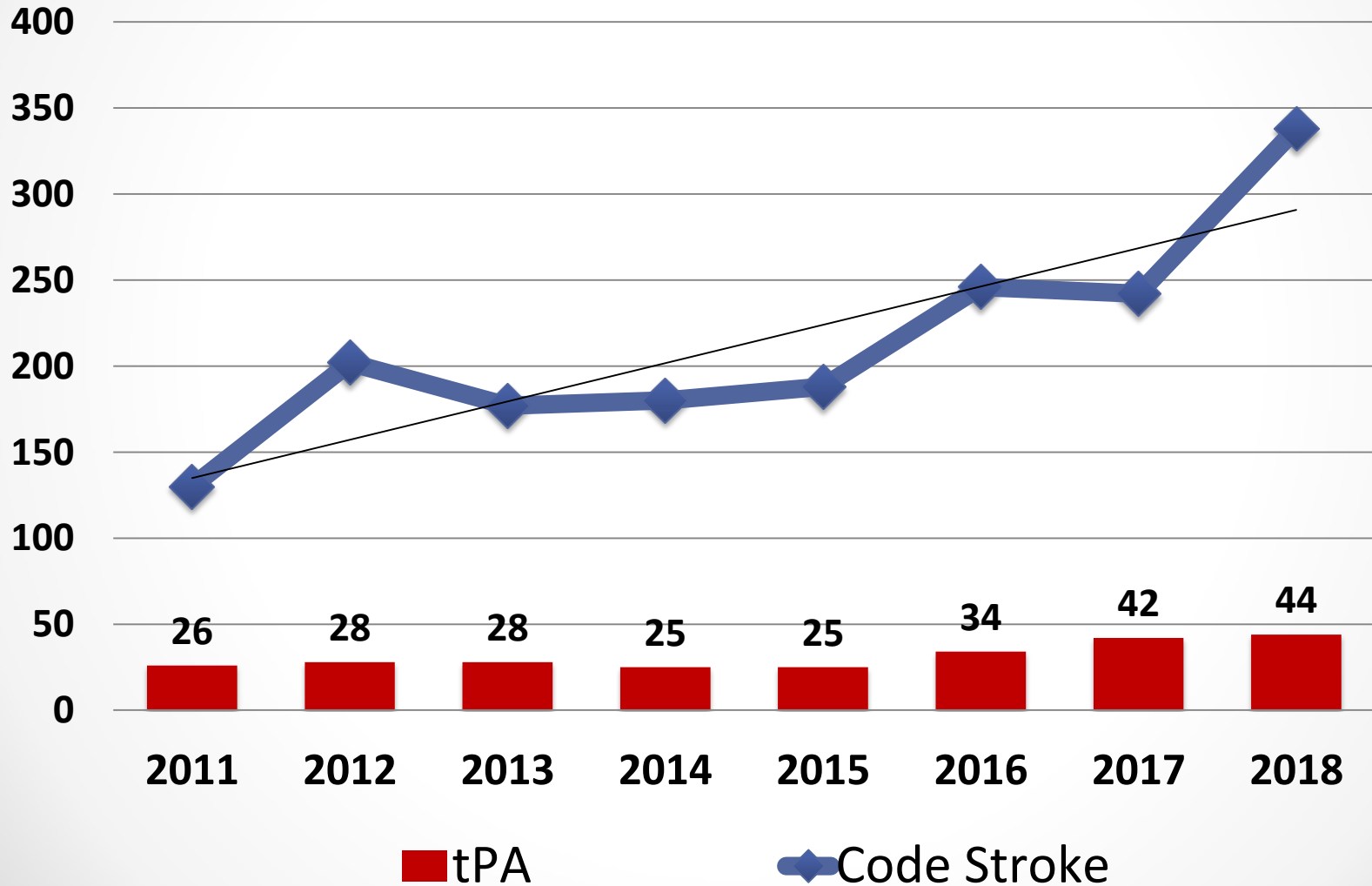


- **Introductions**
- **Why? .....History of Acute Stroke at QHC**
  - Increasing volumes
  - Challenging bed pressures in acute medicine
- **How? .....Integrating stroke care at QHC**
  - Creating a unified team
  - Utilizing a successful rehab model
- **Discussions with ISU front line staff**

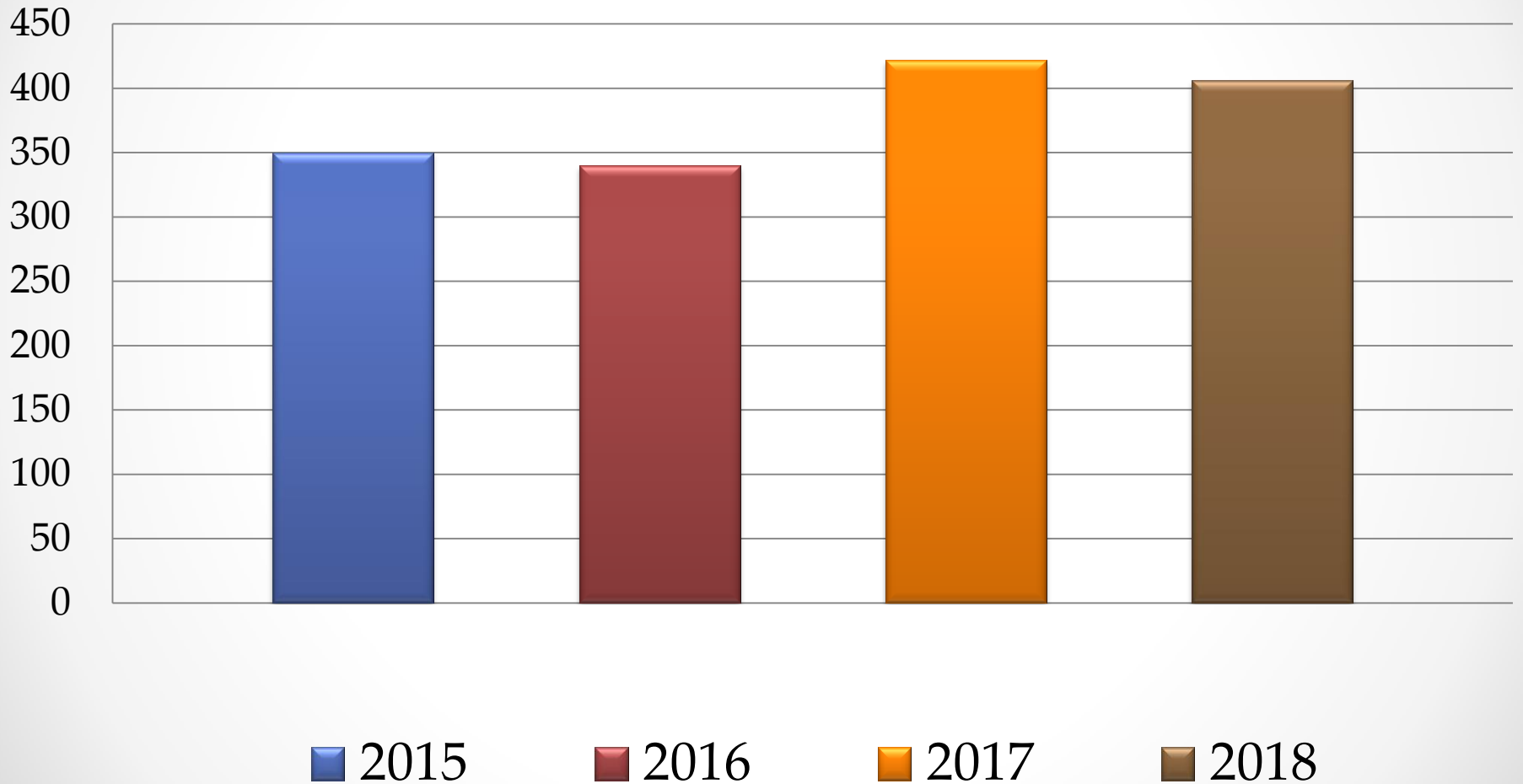
# History of Stroke at QHC



# tPA and Code Stroke (2011-2018)



# Designated Stroke Unit Volumes (2015-2018)



# Acute Stroke & General Medicine



# Questions for staff...

## **Angie (ISU RN)**

You worked for years on Acute Medicine and then came to IP Rehab for 1 year prior to the ISU. We already heard that Q5 Medicine staff tried to focus on stroke in a very frenzied environment. Despite all of the dedication, everyone knew a change was needed to make significant progress with stroke care.

**Tell us your RN view of acute stroke survivors moving to a rehab environment.**



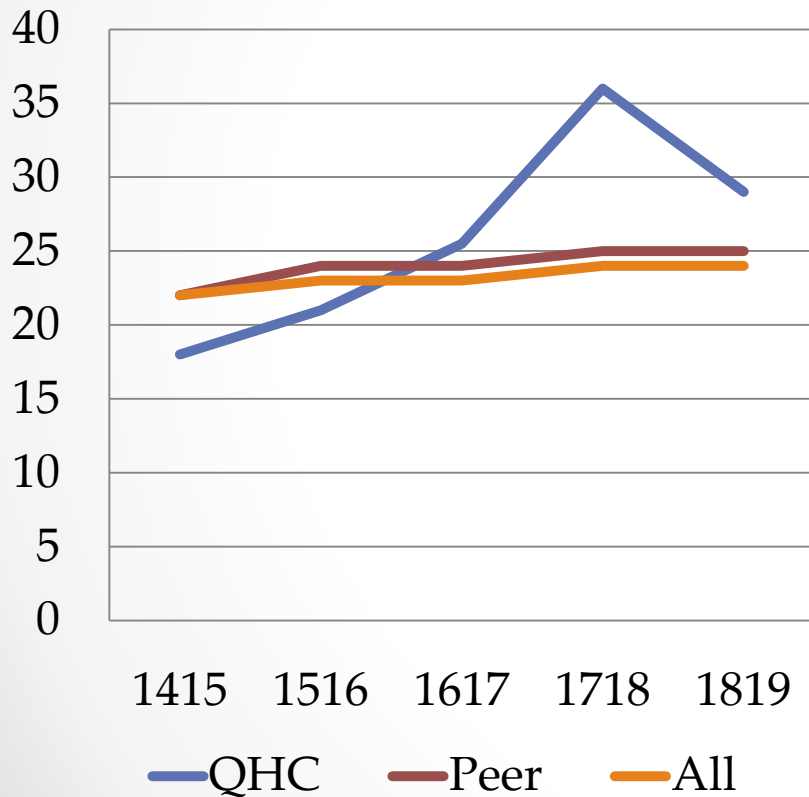
# Teamwork & Trust



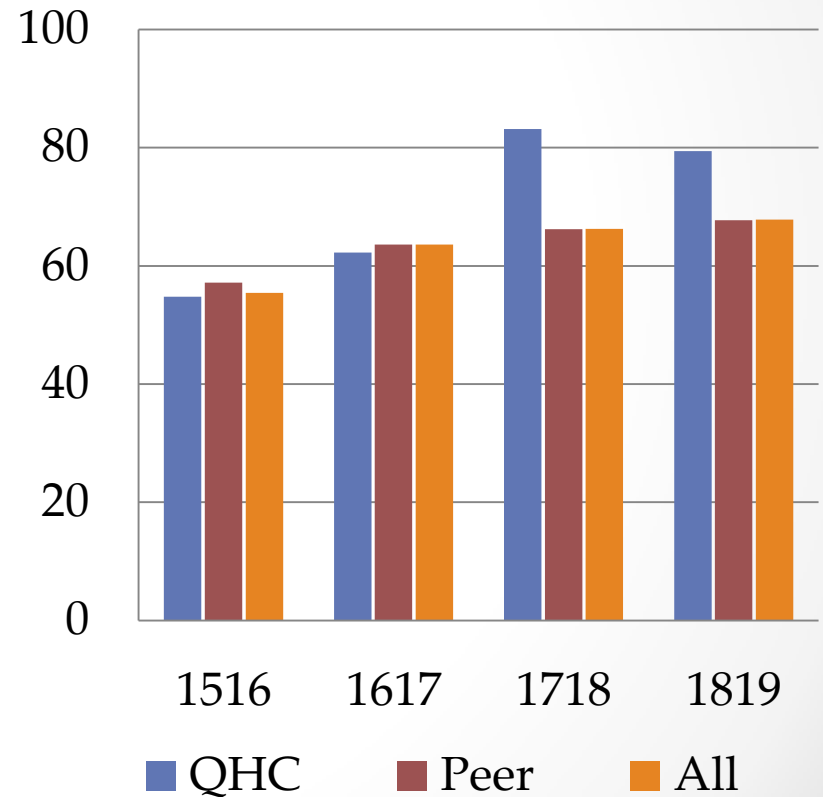


# Patient Outcomes

## Total Function Change



## Rehab Intensity Mins



# QHC ISU Project Summary

Primary Driver	Secondary Driver
<b>Physical Environment</b>	Floor mapping
	Equipment
<b>Bed Flow &amp; Care</b>	Flow options
	Cardiac care
	Assignments
	Surge
<b>Human Resources</b>	Education
	Recruitment
	Staff leadership
<b>Communication</b>	Internal / external
	Family & caregivers
<b>IS &amp; IT</b>	Reports
	Beds
	Finance / budget

Staff.....



# Questions for staff...

## **Shirley (ISU SLP)**

Prior to the ISU, you worked on IP Rehab for many years with a typical occupancy of 18-24 rehab patients. The ISU has created a new challenge for you and your group but your small team of 4 has been resourceful with strategies to keep patient goals & outcomes in focus.

**Please tell us how SLP and CDA staff came together to ensure the new environment remained productive & patient focused.**



# Education

Stroke days

Medical days

Cardio days (nursing only)



# Questions for staff...

## **Hannah**

You are a relatively new nurse and have only worked on IP rehab in your career. You were a keen participant but likely had some worries going into this new world.

**Tell us what you were personally worried about before the ISU started and if any of those worries were real once the ISU started.**



# Mentorship



# Questions for staff...

**Angie**

**Tell us your role in the new unit's construction and your view on how the education & mentorship played out.**



# Questions for staff....

## **ALL**

- Tell us one thing that was a positive surprise for you when working on the ISU in 2019

# Questions for staff...

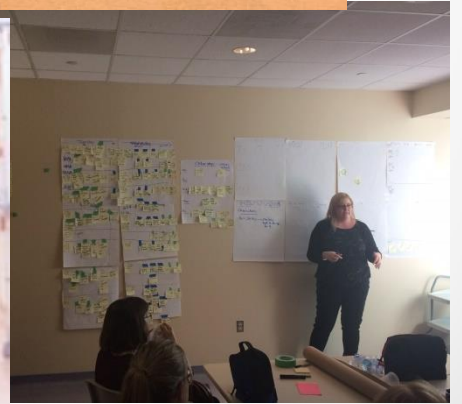
## **ALL**

Tell us what you have seen that could be considered positive patient outcomes on the ISU.

# Key Points

- **We hope you remember these important details...**
  - Teamwork is VERY important.....talk about the goals early!
  - Front line staff really know the best way to do things
  - Mentorship is better when it has time to sink in
  - We missed on some items but the team made it work

# Our team !!!





Angie RN – [amaxwell@qhc.on.ca](mailto:amaxwell@qhc.on.ca)    Hannah RPN – [hhealey@qhc.on.ca](mailto:hhealey@qhc.on.ca)

Derk Mgr – [ddamron@qhc.on.ca](mailto:ddamron@qhc.on.ca)    Melissa RN – [mroblin@qhc.on.ca](mailto:mroblin@qhc.on.ca)

Shirley SLP [swilliams@qhc.on.ca](mailto:swilliams@qhc.on.ca)