



STROKE NETWORK
of Southeastern Ontario

A Lean Approach to Maximizing Stroke Rehab Intensity

Neenah Navasero, Stefan Pagliuso, Sarah Rose, Brenda St. Amant,
Gorana Zubic

Brag and Steal – Regional and Provincial Rehabilitation Intensity Update
Southeastern Ontario Stroke Best Practice Symposium
Implementing Rehabilitation Intensity Inpatient Rehabilitation

Context

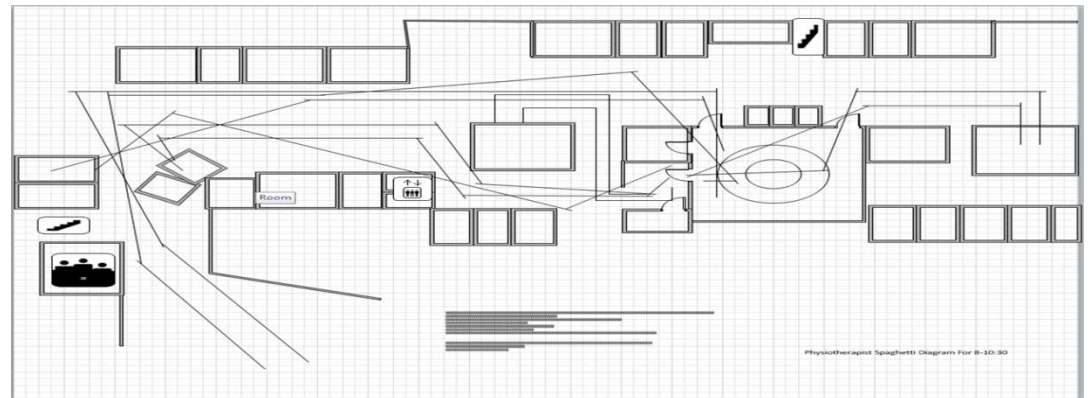
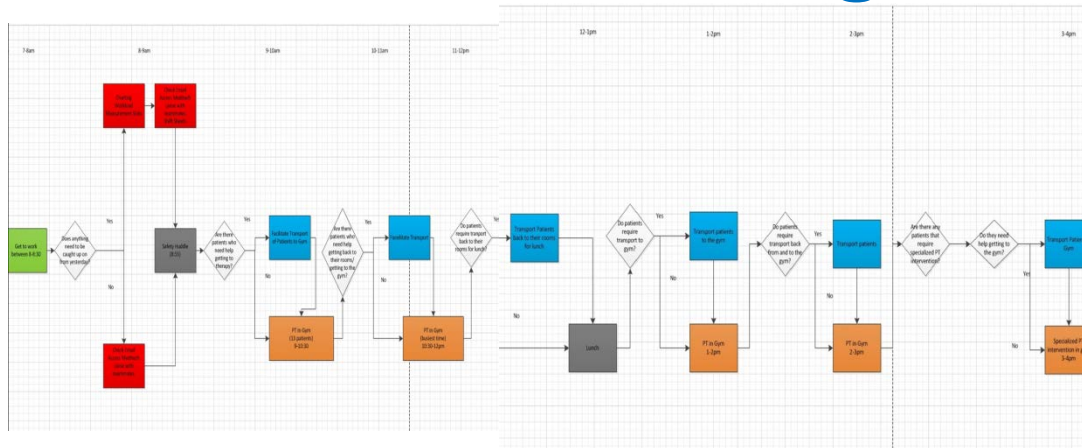
- In trying to achieve maximal stroke rehab intensity, this project undertook a Lean Processing approach to maximizing physiotherapy intensity being delivered to persons significantly affected by stroke

Intervention

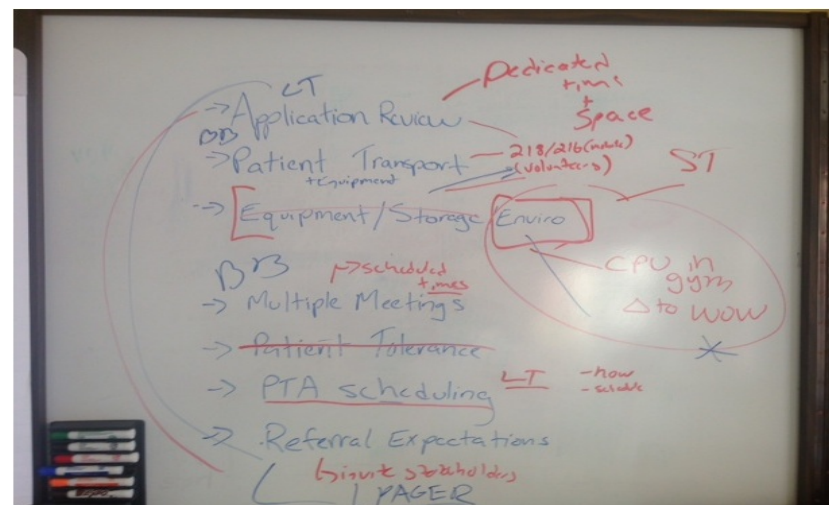
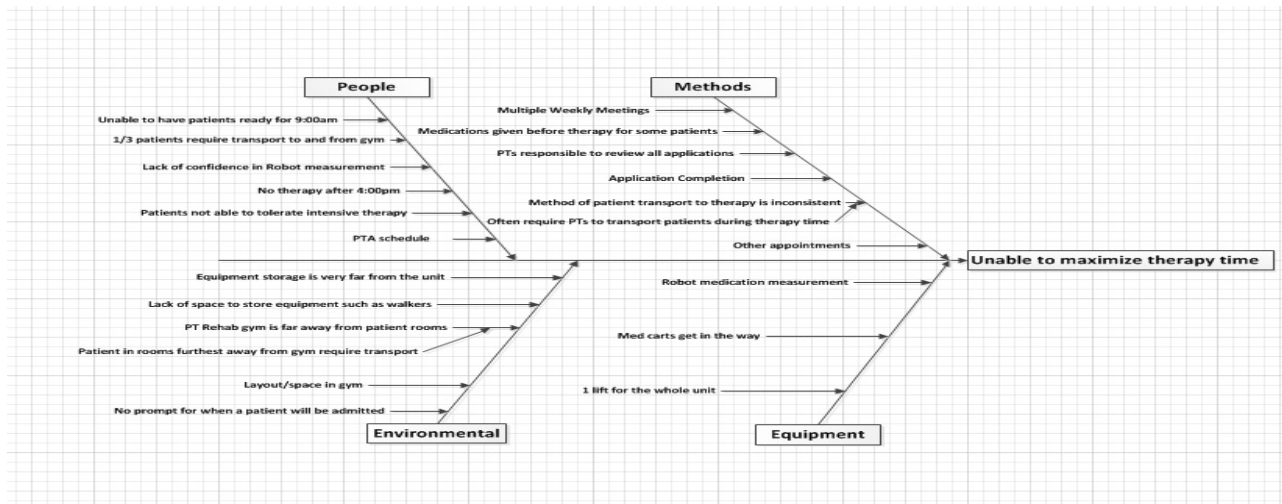
- LEAN SIX SIGMA

A set of principles, concepts, and techniques designed for a relentless pursuit in the elimination of waste.

Value Stream Mapping and Spaghetti Diagram



Fishbone Diagram and Pareto Analysis



Changes Made

- **Physical Gym Environment**
 - Removal of unnecessary equipment
 - Reorganization
 - New equipment
- **Application Review Process**
 - Assigned schedule
 - Inclusion of OTs
- **Referral Expectations**
 - 1-pager for referral sources
 - Stakeholder breakfast
- **Patient Transport**
 - Volunteer transport
- **Scheduling Changes**
 - Reconfiguration of scheduled gym times

Measurement

Statement	Average Level of Agreement (1-5)
Results	
Modifying gym space increased efficiency	4
Modifying gym space increased safety	4.75
Application Review Process changes created more available time to spend with patients	3.5
Information 1-pagers have created realistic expectations in patients and families	4
Patient/gym scheduling changes allowed for more effective treatment time spent with patients	5
Volunteers assisting with patient transport has increased amount of available treatment time	4.75

Contact for more information:

Name: Stefan Pagliuso

Role on Team: Central South Regional Rehabilitation and
Community Coordinator

Email: pagliuso@hhsc.ca

Phone: 905 521-2100 ext. 44127