



**COMMUNITY REINTEGRATION LEADERSHIP TEAM
BIENNIAL UPDATE
DECEMBER 2016**



PERSON-CENTRED SKILLED STROKE CARE & REHABILITATION

- ✓ Sustained Enhanced Community Rehab Program
- ✓ Stroke Specific Exercise Programs in Perth, Belleville, Brockville & Kingston
- ✓ Stroke Care Plans for LTC
- ✓ Outpatient physiotherapy in Brockville
- ✓ The Brain, the Body & You Workshops
- ✓ Dissemination of new best practice resource (TACLS)
- ✓ Best Practice Bloggers on stroke care



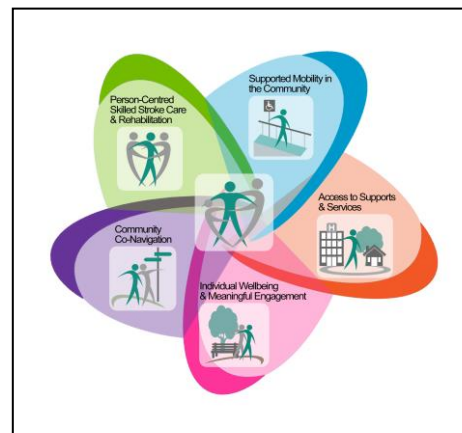
COMMUNITY CO-NAVIGATION

- ✓ Peer Visiting Volunteers in Perth and Kingston (SMOL & community). Hospital peer visiting pending in Kingston (KGH) & Brockville.
- ✓ [Stroke Resources](#) microsite on the SE Healthline
- ✓ Investigate provincial & regional navigation models
- ✓ Update to Stroke Network of Southeastern Ontario website including [Community Supports](#) section


In 2007, the [Stroke Network of Southeastern Ontario](#) conducted a [community consultation](#) in which stroke survivors, caregivers and health care providers were invited to share their experiences of community reintegration following stroke. One of the actions emerging from the consultation report was the creation of the Community Reintegration Leadership Team (CRLT); a team that includes persons with stroke and family members as well as community service providers. The mandate of the CRLT is to respond to the interests of stroke survivors, caregivers and service providers in the community and long-term care sector through the support, advancement and sustainability of initiatives and actions intended to enhance community reintegration.

In 2015, a new consultation was conducted under the advisement of the CRLT to ensure that the key directions identified in 2007 continued to reflect the current reality of community reintegration following stroke. The resultant report, [What We Heard: Charting a Course for Successful Community Reintegration After Stroke](#), identified five key themes which will inform the work of the CRLT and the Stroke Network of Southeastern Ontario.

Should you have any questions and/or would like to provide feedback on this report, please contact Gwen Brown, Regional Community & LTC Coordinator with the Stroke Network of Southeastern Ontario at 613-549-6666 X 6867 or by email at browng2@kgh.kari.net.




MOBILITY IN THE COMMUNITY




- ✓ Highlighting impact of loss of driver's license with providers and benefits of referral to SW and OT

ACCESS TO SUPPORTS & SERVICES



- ✓ Post Stroke Community Exercise Guidelines & Brochure
- ✓ Revising of Community Reintegration Questionnaires
- ✓ Exploring Return to Work resources

INDIVIDUAL WELL-BEING & MEANINGFUL ENGAGEMENT



- ✓ Sustained support groups for stroke survivors & caregivers in Kingston, Belleville, Brockville & Perth
- ✓ Pilot Support Group Outreach in Belleville
- ✓ Pilot Social/Recreational group in Kingston
- ✓ Pilot Aphasia Conversation Groups in Belleville
- ✓ Living with Stroke Programs
- ✓ Promoting value of SW referrals within Enhanced Community Rehab Program