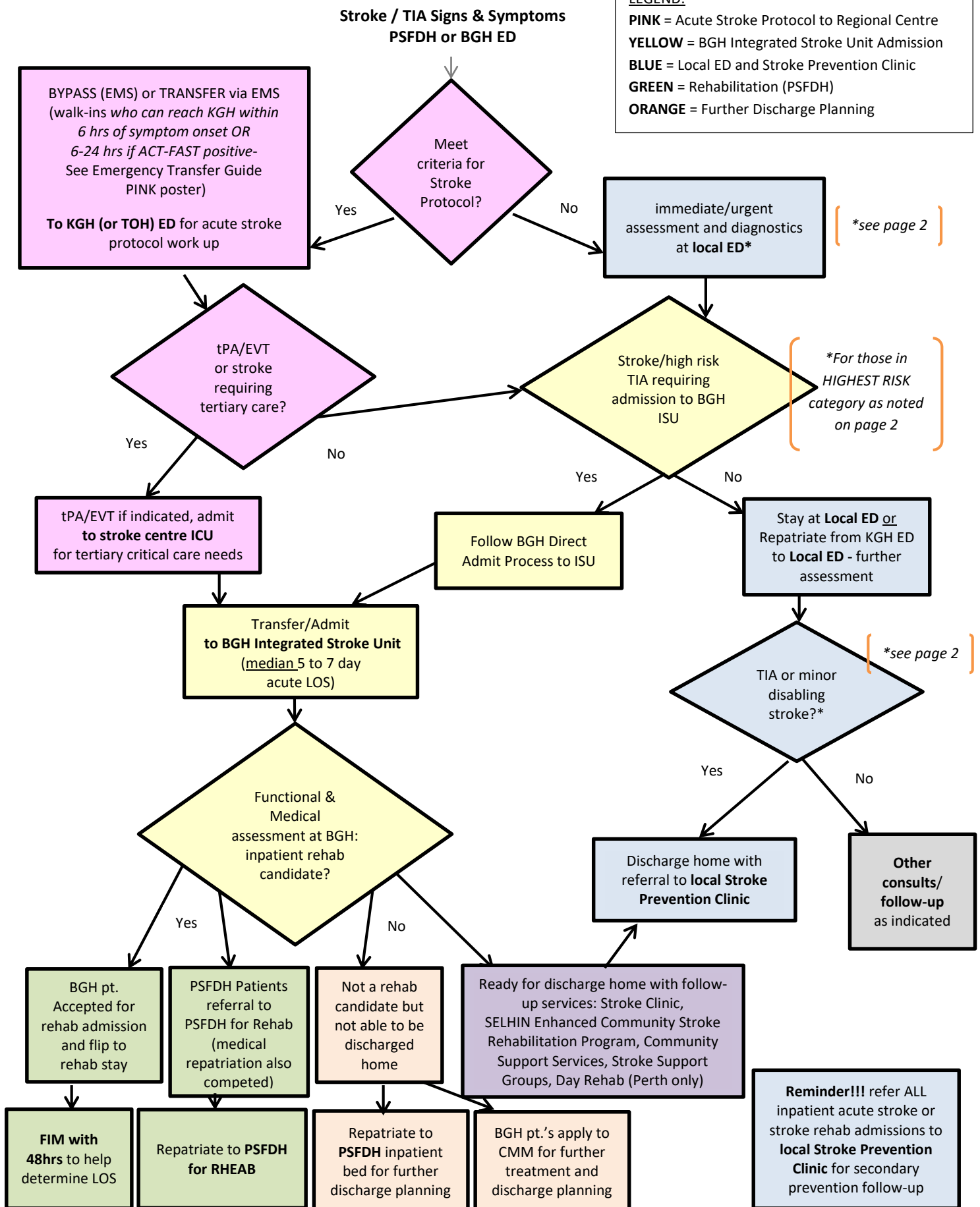




# Lanark Leeds & Grenville Stroke Care Algorithm

BGH/PSFDH/KGH (Original April 7, 2016; Rev. September 29, 2020)

**LEGEND:**  
**PINK** = Acute Stroke Protocol to Regional Centre  
**YELLOW** = BGH Integrated Stroke Unit Admission  
**BLUE** = Local ED and Stroke Prevention Clinic  
**GREEN** = Rehabilitation (PSFDH)  
**ORANGE** = Further Discharge Planning



An ADULT presents to ED or Inpatient Unit with Stroke/TIA Symptoms & is not a Candidate for Thrombolytic Therapy and/or Endovascular Therapy

Are the symptoms:  
Hemibody motor weakness (may be in face, arm +/- leg) +/-  
Hemibody sensory loss (numbness) (must involve at least 2 body segments (face/arm or arm/leg) +/-  
Speech or language disturbance +/-  
Clear monocular or hemifield vision loss

- YES & Symptoms within 48 hrs of symptom onset
- Sudden & reach peak severity within few secs
- Persistent or fluctuating

**Highest Risk**

- Immediate Transfer to BGH for admission to Stroke Unit
- Before transfer, CT scan of head immediately. Order as Emergent-Stat within 1 hour
- CTA of head & neck. If unavailable or contraindicated-Carotid Doppler. Order as Emergent-ASAP within 10 hours

- YES & Symptoms within 48 hrs of symptom onset
- Sudden & reach peak severity within few secs
- Symptoms completely resolved-No persistent or fluctuating symptoms within 24 hours

**High Risk**

- Discharge from ED only after the following is completed:
  - CT scan of head + CTA of head & neck before discharge home from ED: If CTA unavailable or contraindicated-Carotid Doppler. Order as Emergent-ASAP within 10 hours
  - Referral completed & faxed to Local Stroke Prevention Clinic for follow up ASAP

- YES & Symptoms between 48 hrs & 2 weeks of onset
- Not persistent or fluctuating

**Increased**

- Discharge from ED after the following is ordered as outpatient:
  - CT scan of head + CTA of the head and neck: If CTA unavailable or contraindicated-Carotid Doppler. Order as Urgent-Next available within 72 hours
  - Referral completed & faxed to Local Stroke Prevention Clinic for follow up

- NO Symptoms within last 2 weeks/OR Atypical sensory symptoms present (such as patchy numbness and/or tingling)
- Symptoms may be sudden in onset but typically take more than 10 min to reach peak severity

**Lower Risk**

- Discharge from ED providing CT scan of head booked & completed within 72 hours. Order as Urgent-Next available within 72 hours
- Carotid Doppler. Order as Less Urgent-Next available within 2 weeks
- Referral completed & faxed to Local Stroke Prevention Clinic for follow up

Resource:

[www.strokebestpractices.ca](http://www.strokebestpractices.ca)