

LAMS SCORECARD

Would this patient benefit from Stroke EVT?

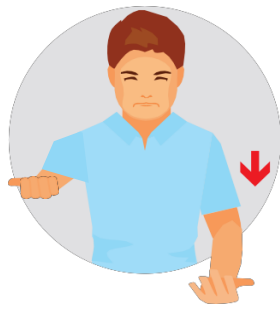


STEP 1 FACIAL DROOP

Ask the person to smile. Is there any weakness or facial droop?

- 0 Absent
- 1 Facial droop present

— +



STEP 2 ARM DRIFT

Bring the person's arm(s) up to a 90° angle and ask them to hold that position for 10 seconds. Is there any drift or drop of an arm?

- 0 Absent
- 1 Drifts Down
- 2 Falls Rapidly

+ =



STEP 3 GRIP STRENGTH

Ask the person to grip your hands. Does one hand have less power than the other?

- 0 Normal
- 1 Weak Grip
- 2 No Grip

=



STEP 4 ADD SCORE

Total possible score is 5

If LAMS score is positive (4 or greater), patient may be eligible for EVT

January 13, 2021; Adapted from Northwestern Ontario Regional Stroke Network

LAMS SCORECARD

Would this patient benefit from Stroke EVT?

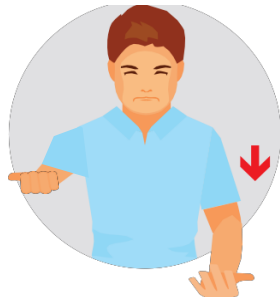


STEP 1 FACIAL DROOP

Ask the person to smile. Is there any weakness or facial droop?

- 0 Absent
- 1 Facial droop present

— +



STEP 2 ARM DRIFT

Bring the person's arm(s) up to a 90° angle and ask them to hold that position for 10 seconds. Is there any drift or drop of an arm?

- 0 Absent
- 1 Drifts Down
- 2 Falls Rapidly

+ =



STEP 3 GRIP STRENGTH

Ask the person to grip your hands. Does one hand have less power than the other?

- 0 Normal
- 1 Weak Grip
- 2 No Grip

=



STEP 4 ADD SCORE

Total possible score is 5

If LAMS score is positive (4 or greater), patient may be eligible for EVT

January 13, 2021; Adapted from Northwestern Ontario Regional Stroke Network

- **Los Angeles Motor Scale (LAMS)** is a brief 3-item stroke severity assessment measure designed for pre-hospital use.
- It identifies possible **large vessel occlusion (LVO) stroke** & potential eligibility for endovascular thrombectomy (EVT).
- *A score of 4 or greater is considered positive.*
- Patients scoring 4 or 5 may benefit from EVT to reduce or eliminate disability.

Key Messages for Southeastern Ontario

1. **There is NO change across Southeastern Ontario in terms of stroke bypass/re-direct.** The process is the **usual Acute Stroke Protocol process** for paramedics. Patients who fit prompt card criteria will go to closest Stroke Centre if within 6 hr time window. Outside 6-hr time window, they go to local hospital ED who will assess & decide on transfer to KGH for EVT. **EDs are using ACT FAST as their LVO screen/triage tool** & can transfer directly to KGH on stroke protocol if ACT FAST positive **in 6 to 24 hour time window.**
2. Paramedics **provide CACC with actual LAMS score.**
3. Paramedics **let local hospital ED know they have a patient that is LVO positive when patching in about Acute Stroke Protocol.** This gives ED a “heads up” to help EDs make faster decisions about Acute Stroke Protocol including transfers.

- **Los Angeles Motor Scale (LAMS)** is a brief 3-item stroke severity assessment measure designed for pre-hospital use.
- It identifies possible **large vessel occlusion (LVO) stroke** & potential eligibility for endovascular thrombectomy (EVT).
- *A score of 4 or greater is considered positive.*
- Patients scoring 4 or 5 may benefit from EVT to reduce or eliminate disability.

Key Messages for Southeastern Ontario

1. **There is NO change across Southeastern Ontario in terms of stroke bypass/re-direct.** The process is the **usual Acute Stroke Protocol process** for paramedics. Patients who fit prompt card criteria will go to closest Stroke Centre if within 6 hr time window. Outside 6-hr time window, they go to local hospital ED who will assess & decide on transfer to KGH for EVT. **EDs are using ACT FAST as their LVO screen/triage tool** & can transfer directly to KGH on stroke protocol if ACT FAST positive **in 6 to 24 hour time window.**
2. Paramedics **provide CACC with actual LAMS score.**
3. Paramedics **let local hospital ED know they have a patient that is LVO positive when patching in about Acute Stroke Protocol.** This gives ED a “heads up” to help EDs make faster decisions about Acute Stroke Protocol including transfers.