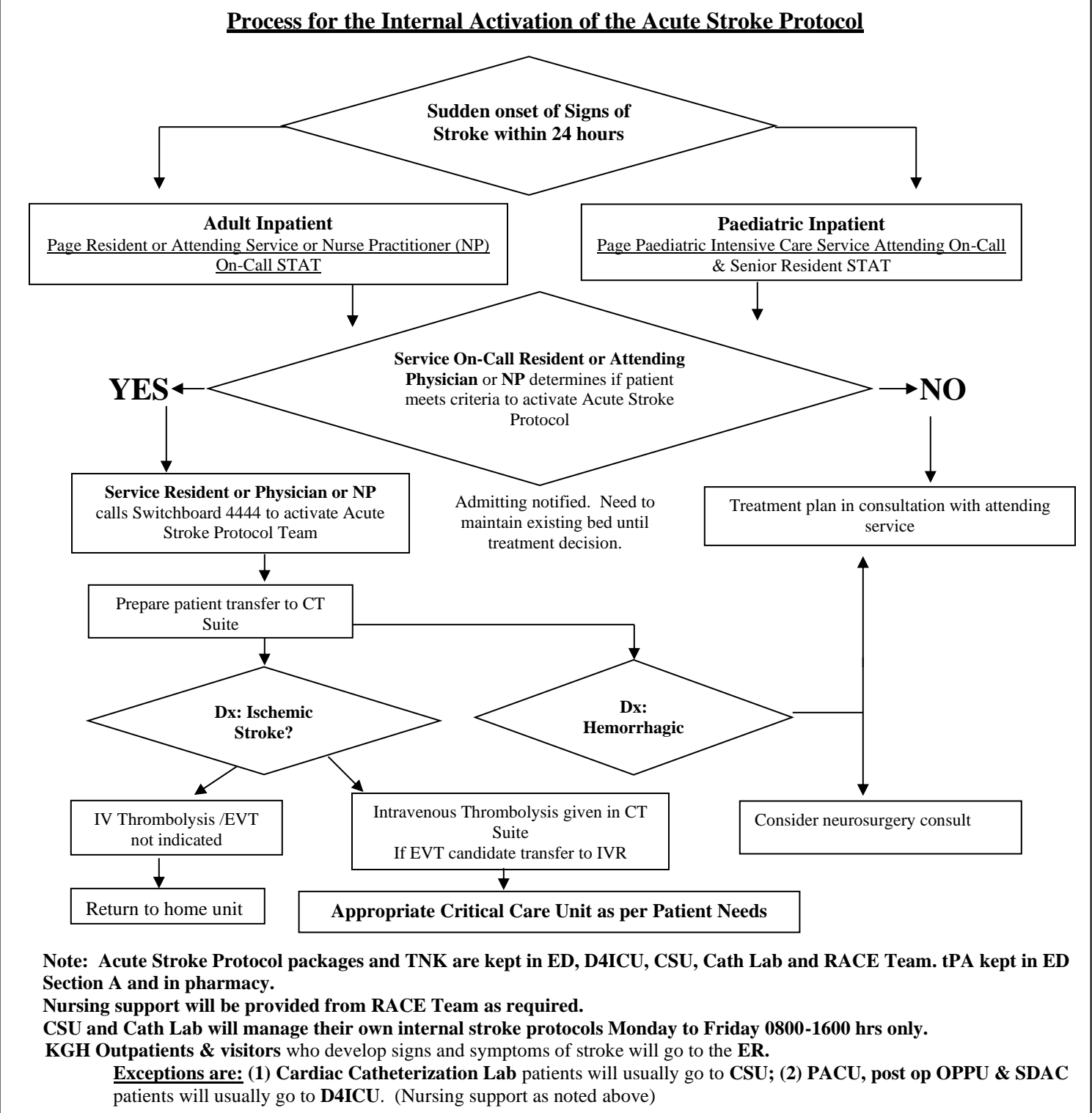


KHSC-KGH Site INTERNAL ACTIVATION of the ACUTE STROKE PROTOCOL

SIGNS of STROKE
FACE: Is it Drooping?
ARMS: Can you Raise Both?
SPEECH: Is it Slurred or Jumbled?
TIME to page Service On-Call STAT

UPDATED
November
2023

Please act quickly to initiate appropriate assessment
 Intravenous Thrombolysis (TNK or rt-PA) and/or Endovascular Thrombectomy (EVT) can significantly reduce the effects of stroke if given to appropriate stroke patients. The earlier treatment is given, the greater the potential for recovery.



Preparation of internal stroke patient for CT scan and for IV Thrombolysis and/or EVT:

RN Responsibilities:

- **Recognize** the signs of stroke.
- Act **quickly**; be mindful that time is BRAIN.
- Notify the **Attending Service** stat and communicate the patient's signs of stroke.
- If Attending Service activates stroke protocol, **prepare the patient:**
 - Monitor vital signs and stroke scale using Canadian Neurological Scale, cardiac and SpO₂ monitoring, glucometer reading, change to gown, remove jewelry on ears and neck/face.
 - Blood work (CBC, PT/INR, PTT, lytes, urea, creatinine, glucose, troponin, TxH packed red blood cells); establish 2 IV lines (18 Gauge needle in Right Arm) unless contraindicated. TNK or rtPA requires a dedicated IV line.
- Accompany to **CT Scan Suite**.
- +/- IV TNK or rtPA administered in CT Scan Suite.
- If EVT candidate, insert foley urinary catheter if ordered.

- Continue monitoring vital signs & neuro status q 15 min.
- **Communicate** with critical care unit **charge nurse** regarding bed transfers if patient receiving IV thrombolysis and/or EVT.
- Contact Manager or the Operations Manager to arrange RACE nurse coverage if needed.
- **Assist in transport** and transfer care to receiving critical care unit nurse and/or IVR nurse (if EVT).
- Keep **strict NPO** until Screening Tool for Acute Neurological Dysphagia (STAND) is done.
- Implement Ischemic Stroke Thrombolysis/EVT Order Set.
- Implement Ischemic Stroke Collaborative Care Plan.

Questions? Contact:

- Stroke Specialist Case Manager x 2830 or 7135/vocera
- Clinical Learning Specialist, Neurosciences x 4083/vocera
- Operations Manager after hours